

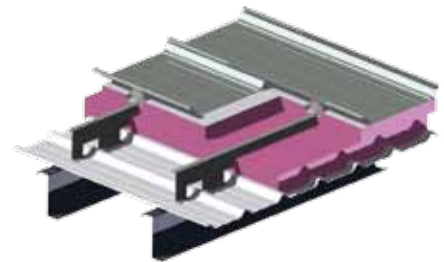
TECHNICAL NOTES

SYSTEM DESCRIPTION

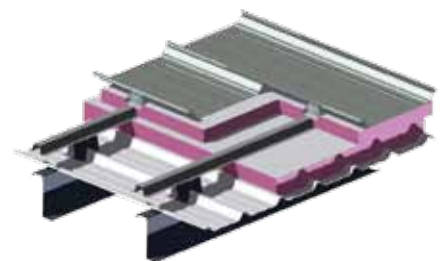
These systems are comprised of a sealed liner panel, a standoff or spacer system, and either a standing seam, or through fastened roof or wall. The system provides a spacious cavity to allow room for more insulation. The system starts with a liner panel that is field sealed at each panel lap which acts as a vapour retarder. The liner also gives the interior a more attractive look, while protecting the insulation from damage.

NOTCHED ZEE STANDOFF SYSTEM (R12 - R20)

The notched Zee system is a cold formed Zee that has been notched to accommodate the ribs of any specified liner panel. It can be ordered in 4", 5" and 6" heights to accommodate insulation thickness from 4" to 7". The extra inch of insulation is achieved by combining this system with the RTL-24 Standing Seam roof system's 4" floating clip, which provides an extra 1" of insulation over the Standoff Zee. This space, along with the standard 1" thermal spacer, provides an effective thermal break, improving the overall efficiency of the system.



NOTCHED ZEE STANDOFF SYSTEM



HAT & CHAIR STANDOFF SYSTEM

HAT & CHAIR STANDOFF SYSTEM (R20 - R40)

It is referred to as the hat and chair system because of its two piece design. Chairs can be ordered in 5", 7" and 9" heights, while the hat adds an additional 2" of height. The system can be designed to accommodate insulation thickness from 7" to 12". Combining this system with the RTL-24 Standing Seam roof system's 4" floating clip provides an extra 1" of insulation over the 2" hat bar. This space, along with the standard 1" thermal spacer, provides an effective thermal break, improving the overall efficiency of the system.

NOTCHED ZEE WALL SYSTEM (R12 - R20)

The notched Zee wall system is essentially the same as the roof version. The Zee section can be notched to accommodate the ribs of any specified liner panel. It can be ordered in 4", 5" and 6" widths to accommodate insulation thickness from 4" to 6". Combining this system with either thermal tape or 2" rolled insulation that covers the wall girts provides an effective thermal break, improving the overall efficiency of the system.

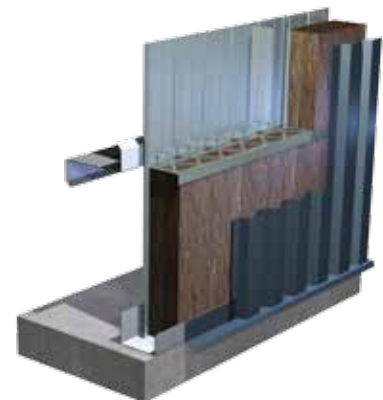
SYSTEM ADVANTAGES

ThermaSeal systems provide a cavity where insulation can be applied uncompressed in layers within the system providing up to R40.

The RTL-24 floating 4" clip and thermal spacer provide an effective thermal break between the external panel and supporting sub-structure.

The attractive sealed liner panel acts as a vapour retarder to control condensation and protect the insulation.

The complete system will also help reduce noise transmission throughout the entire roof and wall assembly.



NOTCHED ZEE WALL SYSTEM